

# Early Childhood Education Needs Assessment Data

Doña Ana County  
2022 [Updated 9/21/2022]

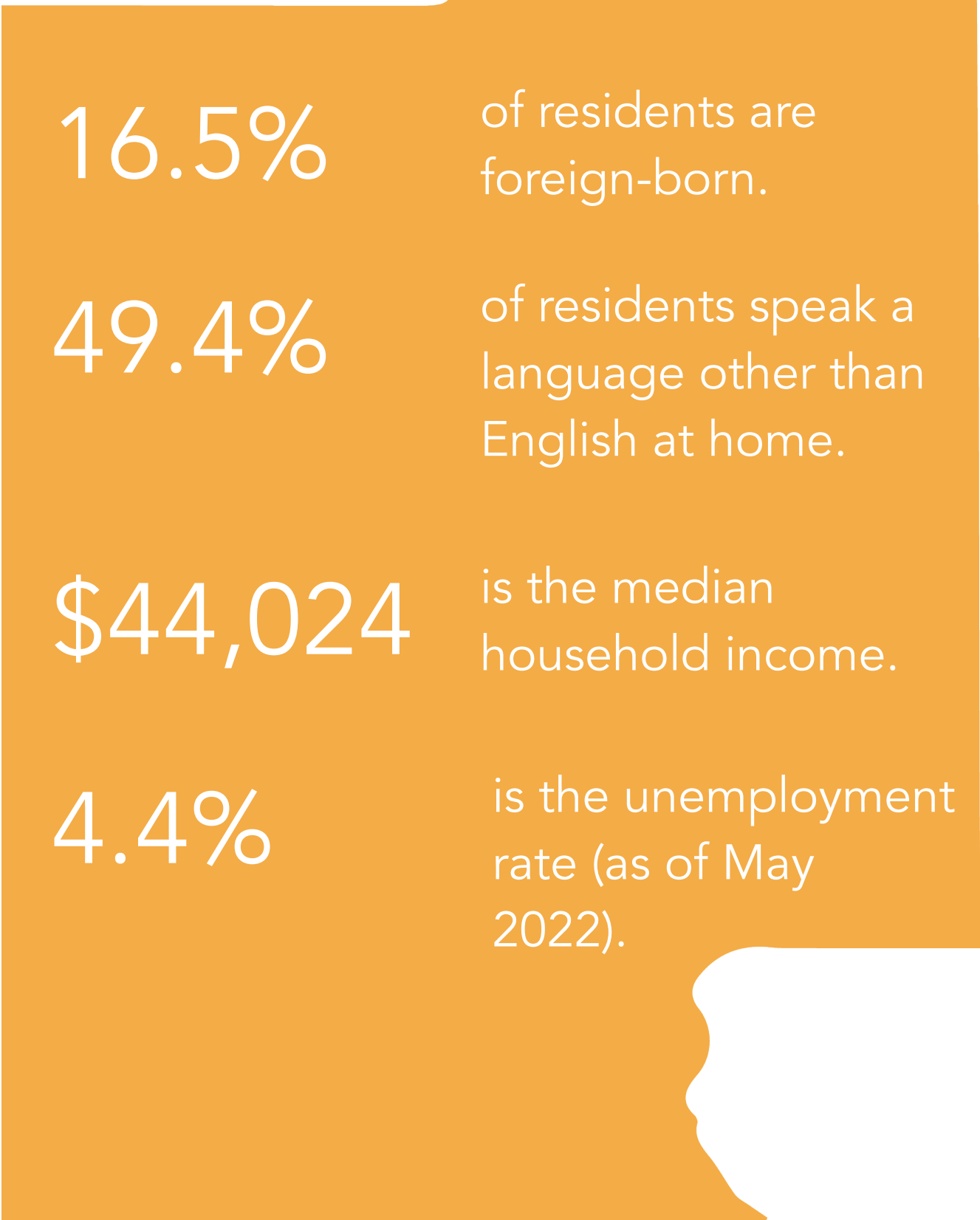
NMSU's Center for Community Analysis  
and the Doña Ana County ECE Coalition



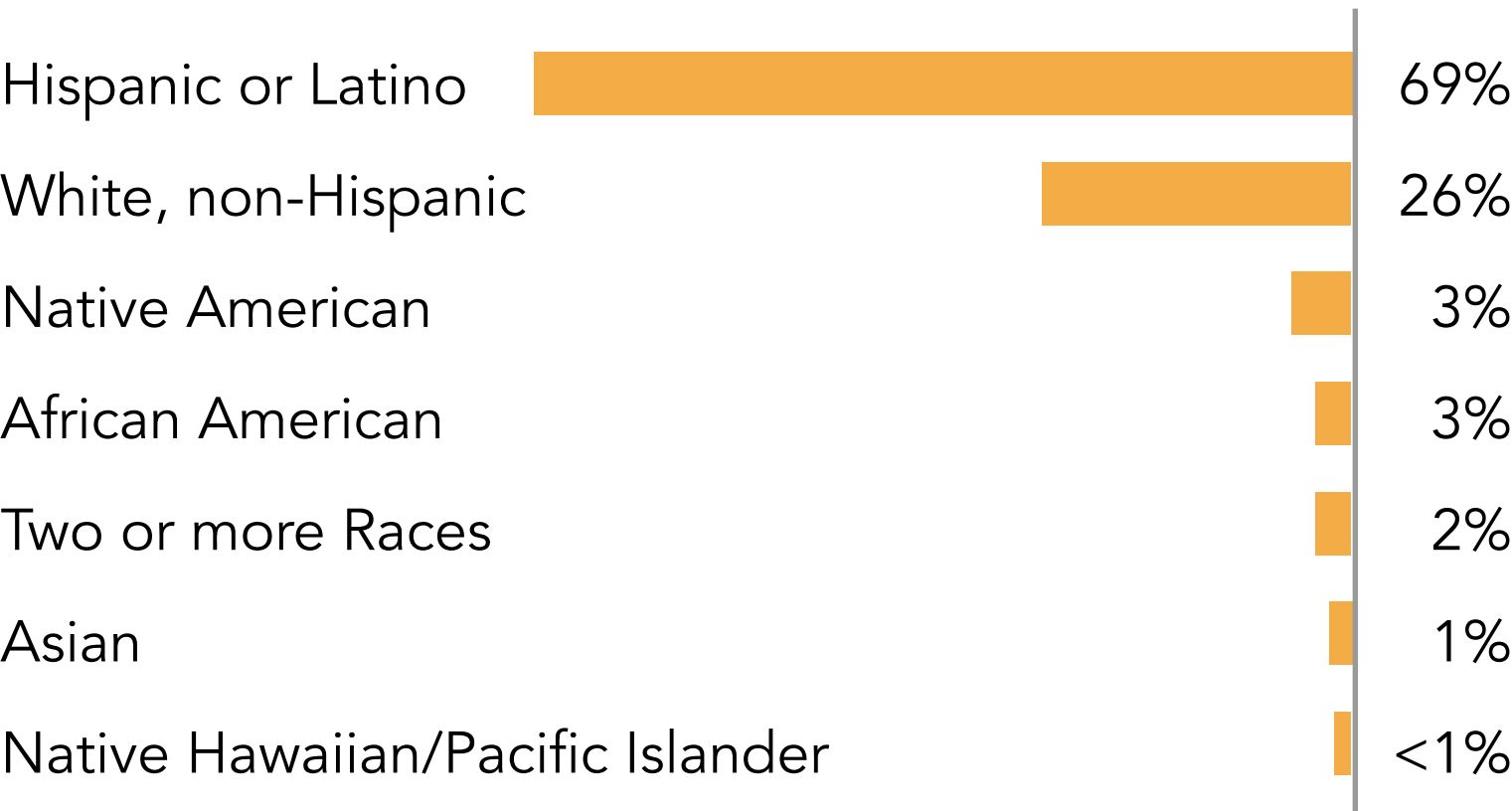


# Population Snapshot: Doña Ana County

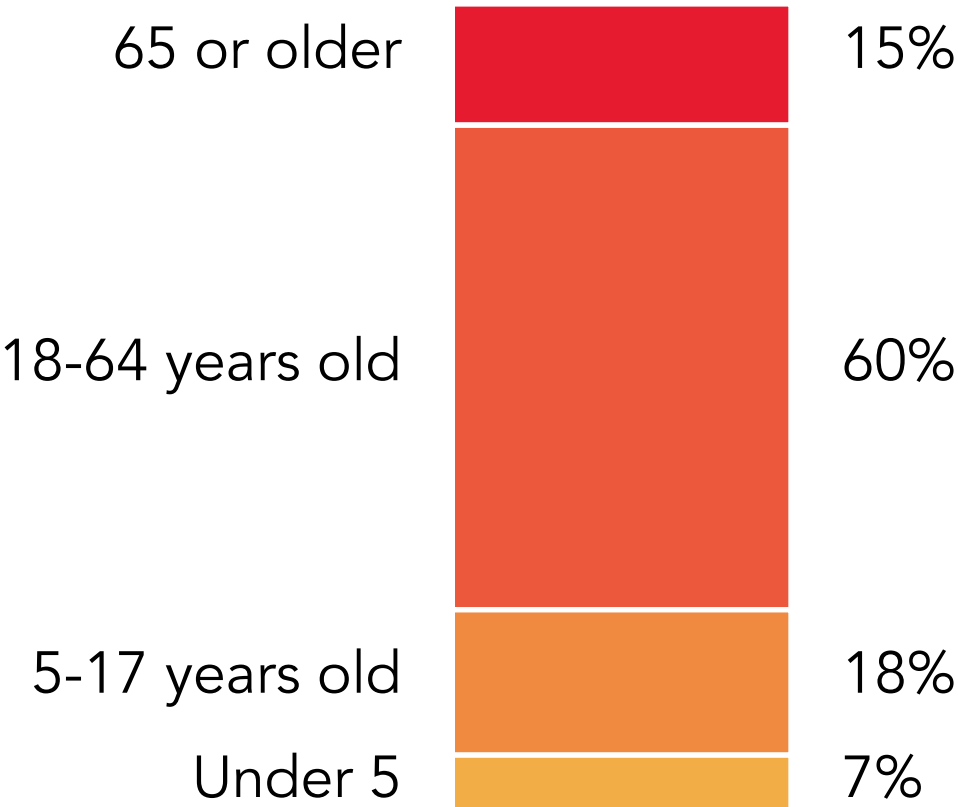
Total population:  
221,508



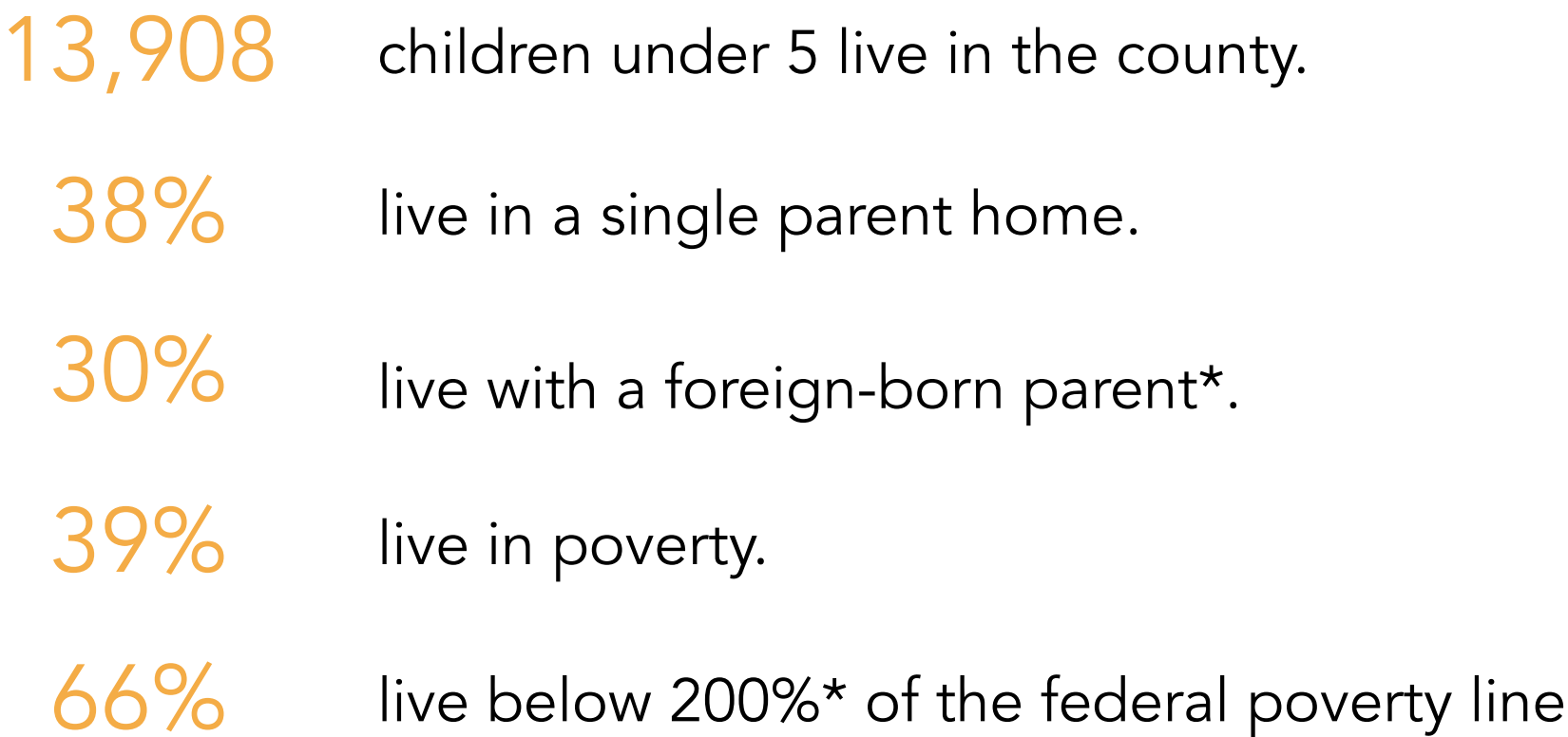
## Demographic Profile



## Age



## Children under 5 years old...



Notes: \*Data represent children under 6 living with at least one foreign-born parent and children under 6 living below 200% FPL. Sources: United States Census Bureau Quickfacts; American Community Survey (ACS) 2020 5 year estimates; New Mexico Department of Workforce Solutions; and the New Mexico Indicator-Based Health System (NM-IBIS)



# Doña Ana County Early Childhood Education Coalition Goals:

- 1** Children are Born into Healthy Homes
- 2** Children are Ready for School
- 3** Early Childhood Workforce is Supported

## Goal 1:

Children are Born into Healthy  
Homes

# Snapshot: Infant and Maternal Health

40%

of mothers took paid leave after delivering their baby.<sup>1</sup>

15%



of Hispanic mothers in NM were uninsured before pregnancy compared to

5%



of non-Hispanic White mothers. (2019)

46%

of children have received developmental screening by age 3.

4.9

deaths per 1,000 births is the infant mortality rate.

24.1

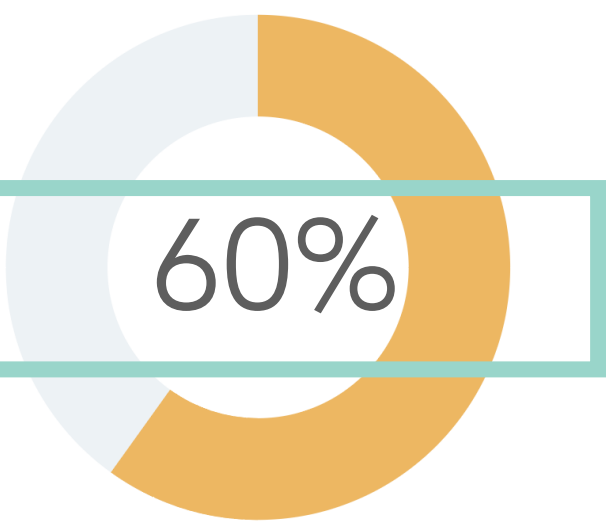
births per 1,000 teens is the teen birth rate.

## Percent of Mothers with Prenatal Care in the First Trimester:



Target<sup>2</sup>: 80.5%

Doña Ana County:



(N=1,567 mothers)

3.4% of mothers in Doña Ana County (N=85) have no prenatal care.

**Quiz Answer**

1. Statewide, Doña Ana County data is not available (2019). 2. Target set by the ODPHP Healthy People 2030 project: <https://health.gov/healthypeople/objectives-and-data/browse-objectives/pregnancy-and-childbirth/increase-proportion-pregnant-women-who-receive-early-and-adequate-prenatal-care-mich-08>; New Mexico Department of Health, New Mexico's Indicator-Based Information System (NM-IBIS), CDC Pregnancy Risk Assessment and Monitoring System (PRAMS)



# Assessing Poverty

## 2022 Poverty Guidelines:

Household/ Family Size	100%	200%	300%	400%
1	\$13,590	\$27,180	\$40,770	\$54,360
2	\$18,310	\$36,620	\$54,930	\$73,240
3	\$23,030	\$46,060	\$69,090	\$92,120
4	\$27,750	\$55,500	\$83,250	\$111,000
5	\$32,470	\$64,940	\$97,410	\$129,880
6	\$37,190	\$74,380	\$111,570	\$148,760
7	\$41,910	\$83,820	\$125,730	\$167,640
8	\$46,630	\$93,260	\$139,890	\$186,520
9	\$51,350	\$102,700	\$154,050	\$205,400
10	\$56,070	\$112,140	\$168,210	\$224,280
11	\$60,790	\$121,580	\$182,370	\$243,160
12	\$65,510	\$131,020	\$196,530	\$262,040
13	\$70,230	\$140,460	\$210,690	\$280,920
14	\$74,950	\$149,900	\$224,850	\$299,800

\$20,858

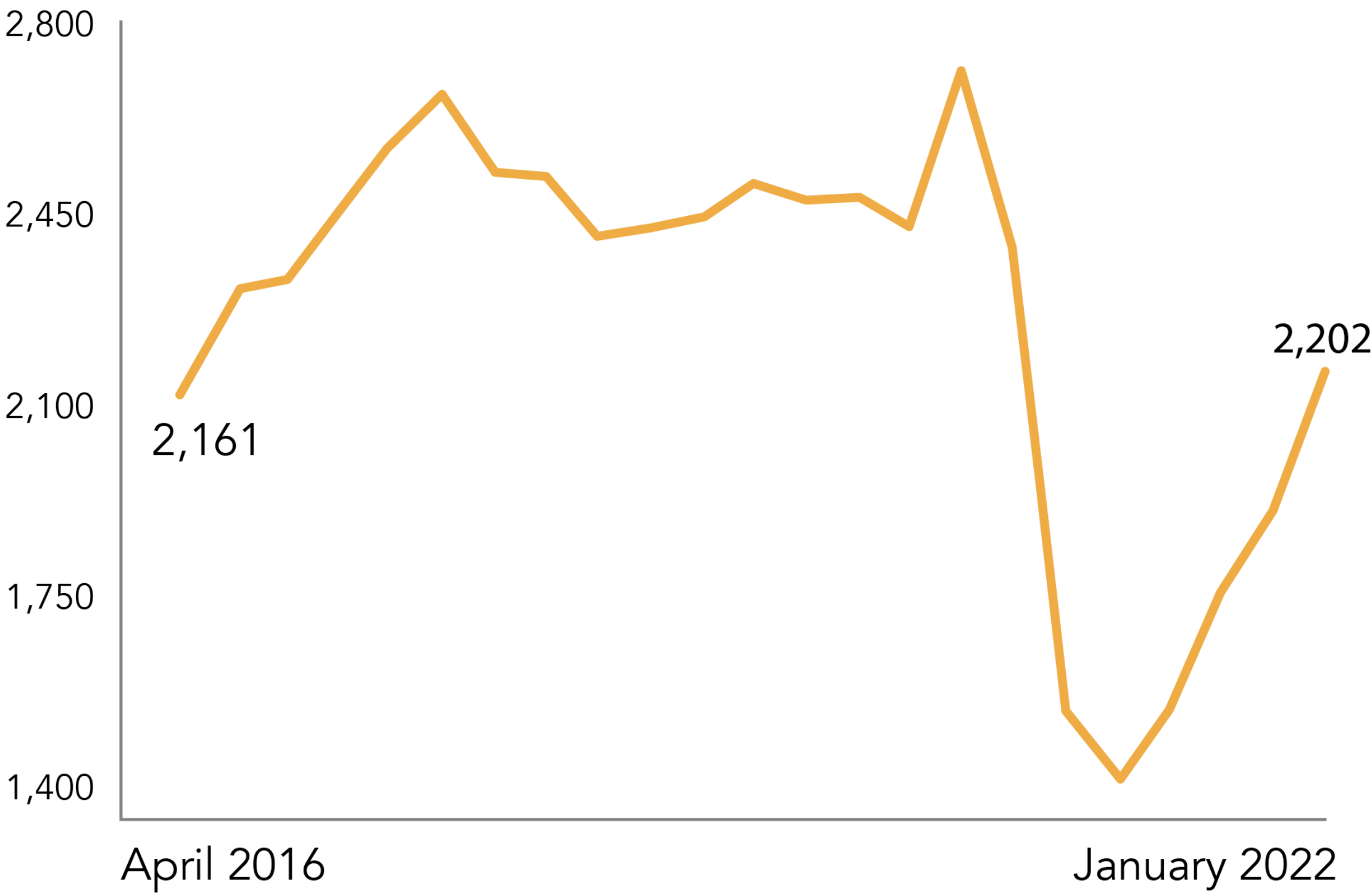
is the median income of **single mothers** with children under 18 in Doña Ana County.

Quiz Answer

<https://aspe.hhs.gov/sites/default/files/documents/4b515876c4674466423975826ac57583/Guidelines-2022.pdf>

# Child Care Subsidies

Number of Children in Doña Ana County  
Receiving a Childcare Assistance Subsidy  
(2016-2022)



Source: New Mexico Early Childhood Education and Care Department (NM ECECD)

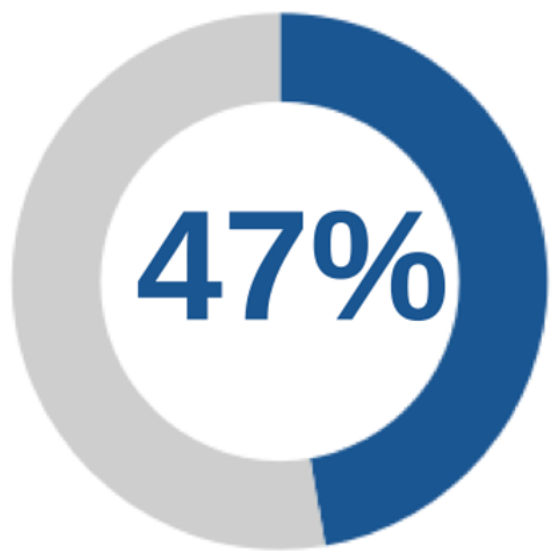
Percent of Children Receiving a Child Care  
Subsidy who are in Licensed vs. Registered Care:

Statewide		
	% Children in Licensed Care	% Children in Registered Care
Jun-17	91.07%	8.93%
Jun-18	93.30%	6.70%
Jun-19	Unavailable	Unavailable
Jun-20	92.33%	7.67%
Jun-21	93.23%	6.77%
Jan-22	94.69%	5.31%
Doña Ana County		
	% Children in Licensed Care	% Children in Registered Care
Jun-17	78.72%	21.28%
Jun-18	82.00%	18.00%
Jun-19	Unavailable	Unavailable
Jun-20	82.28%	17.72%
Jun-21	84.15%	15.85%
Jan-22	87.65%	12.35%

# Need for Child Care

In 2019-2020, the 100% Community Survey of Doña Ana County found that **47% of parents surveyed needed child care services.**

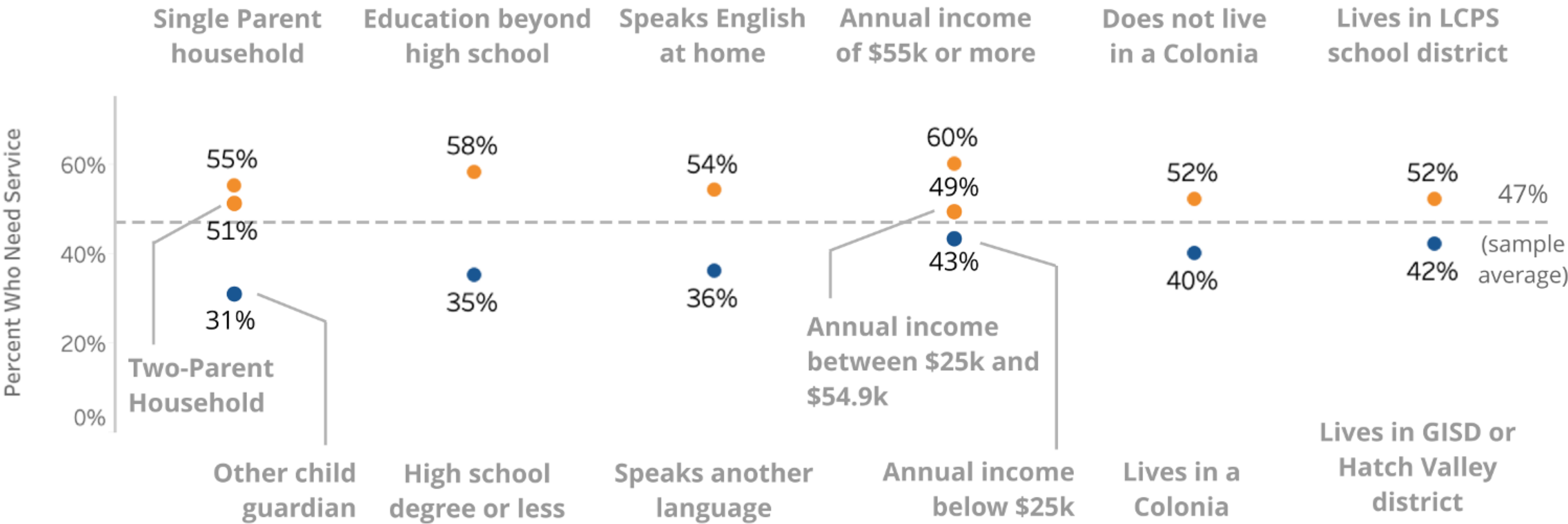
Have you ever needed child care services?  
(Daycare centers or home-based childcare, babysitters, etc.)



Yes  
No

(N = 719)

This need **differed significantly** (p<0.05) based on demographic factors.

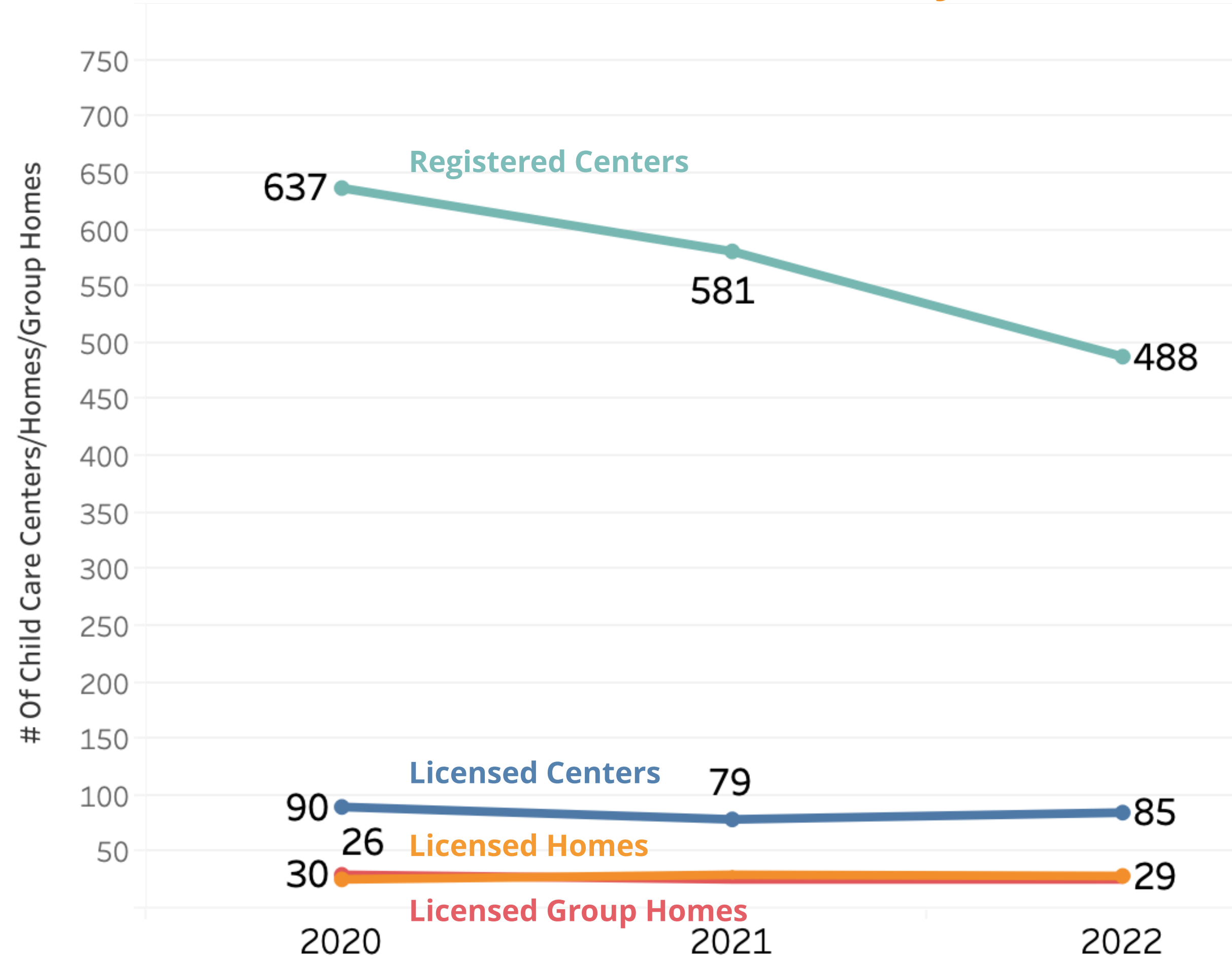


Source: 100% Community Survey, Doña Ana County 2020; Doña Ana County Resilience Leaders and Anna, Age Eight Institute



# Child Care Capacity

## Number of Licensed and Registered Child Care Centers and Homes in Doña Ana County:



Sources: New Mexico Early Childhood Education and Care Department (ECECD); US Census Bureau population statistics 2020

## Capacity in Licensed and Registered Child Care Centers and Homes in Doña Ana County:

If every child under 5 needed child care there would be space for approximately

77%

of children

22%

of all child care spaces could potentially be filled by children 2 years old or younger. The remainder is for children over 2 years of age.



## HOME VISITING HELPS **BABIES** THRIVE

Babies of parents enrolled **prenatally** in home visiting program had:



Better birth outcomes



Better rates  
of immunization



Better success  
with breastfeeding

## HOME VISITING **CONNECTS** FAMILIES TO RESOURCES

- » Medicaid/health insurance
- » Medicaid and dental providers
- » Reproductive Health Services
- » Early Steps (early intervention program)
- » Mental health resources (including domestic violence and counseling)
- » Food assistance (such as SNAP)



- » WIC (food assistance and breastfeeding support)
- » Transportation
- » Housing
- » Community college/education programs
- » Workforce development/job aids

Sources:

<https://ldh.la.gov/assets/oph/Center-PHCH/Center-PH/maternal/MIECHV/LA-MIECHV-Infographic.pdf>; Reaching Families Where They Live, Zero to Three, 2009 and 2014 LDH-OPH-BFH Maternal, Infant and Early Childhood Home Visiting Program, 2017



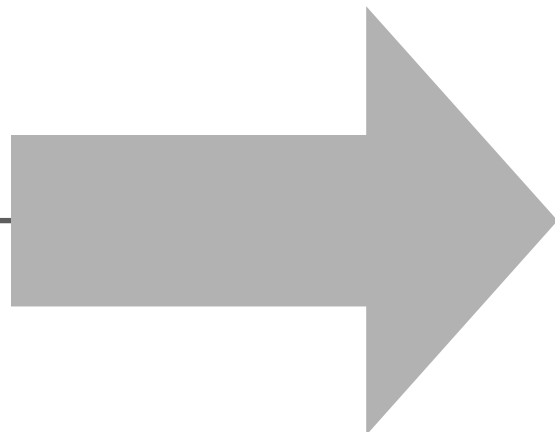
# Home Visiting Capacity in Doña Ana County

How many children are currently funded for home visiting services?

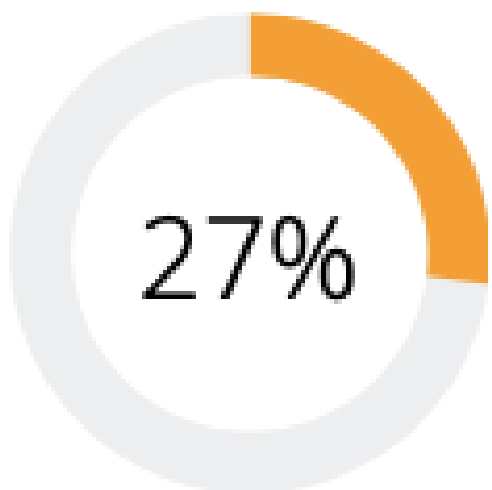
835  
children

How many children would potentially benefit\* from home visiting services?

3,025  
children



How much of the potential need for home visiting services is currently met?



(i.e., 835 out of the 3,025 children identified as potential recipients)

**In 2019, 35% of parents surveyed reported "needing" home visiting services for their child.**

Notes: \*Estimate based on the measure of unmet need established by the New Mexico Birth-Five Early Childhood Needs Assessment. Unmet need is estimated using the "universal access" method: 80% of annual births and 40% of previous year births. Children funded for home visiting do not include private providers (for example, CHI). Funded for services data is from FY 21. Sources: New Mexico Legislative Finance Committee, Report to the 55th Legislature, Volume 3, January 2022 FY23; La Clinica de Familia; 100% Community Survey Doña Ana County 2020, Resilience Leaders and Anna, Age Eight Institute.



# Family Dialogue Circle Feedback about Goal 1: Children are Born into Healthy Homes

## Top themes:

- Employment and education
- Housing, cost of living, homelessness,
- Mental, social, emotional health
- Family values
- Community and public spaces

## The *REALITY* of our community needs include:

*"Jumping through hoops to get assistance when needed. Difficulty accessing child care."*

*"Lack of mental health services and resources."*

*"Families are eager to partake in important family & community issues but want to know that their voice will be heard and taken serious by people in authority, as well action being taken so that Las Cruces can become a more safe place for the families".*

## *Hopes and Dreams* for children being born to health homes & community:

*"Recursos para ninos como salud mental y terapia despues de los 5 anos. (Resources for children such as mental health and therapy after 5 years.)"*

*"An equitable community that values, respects and includes the diverse cultures that exist here. That children feel the pride of their roots and not be attacked for having different beliefs or other languages. A community informed of resources and mutually supportive."*

*"More security & protection in our community."*

*"Affordable extracurricular activities for children."*



# Discussion: Goal 1

What is the story behind the reality of the data? What does this data tell you about the needs in our community to ensure children are born into healthy homes?

What are your hopes and dreams for our children's homes? What are your suggestions for realistic action plans to build toward healthy homes?

Does the data challenge or confirm your knowledge about healthy homes in our community?

Is there any information missing or needing further investigation?

How will you use the data to drive your work in the Coalition and in your personal and professional life?

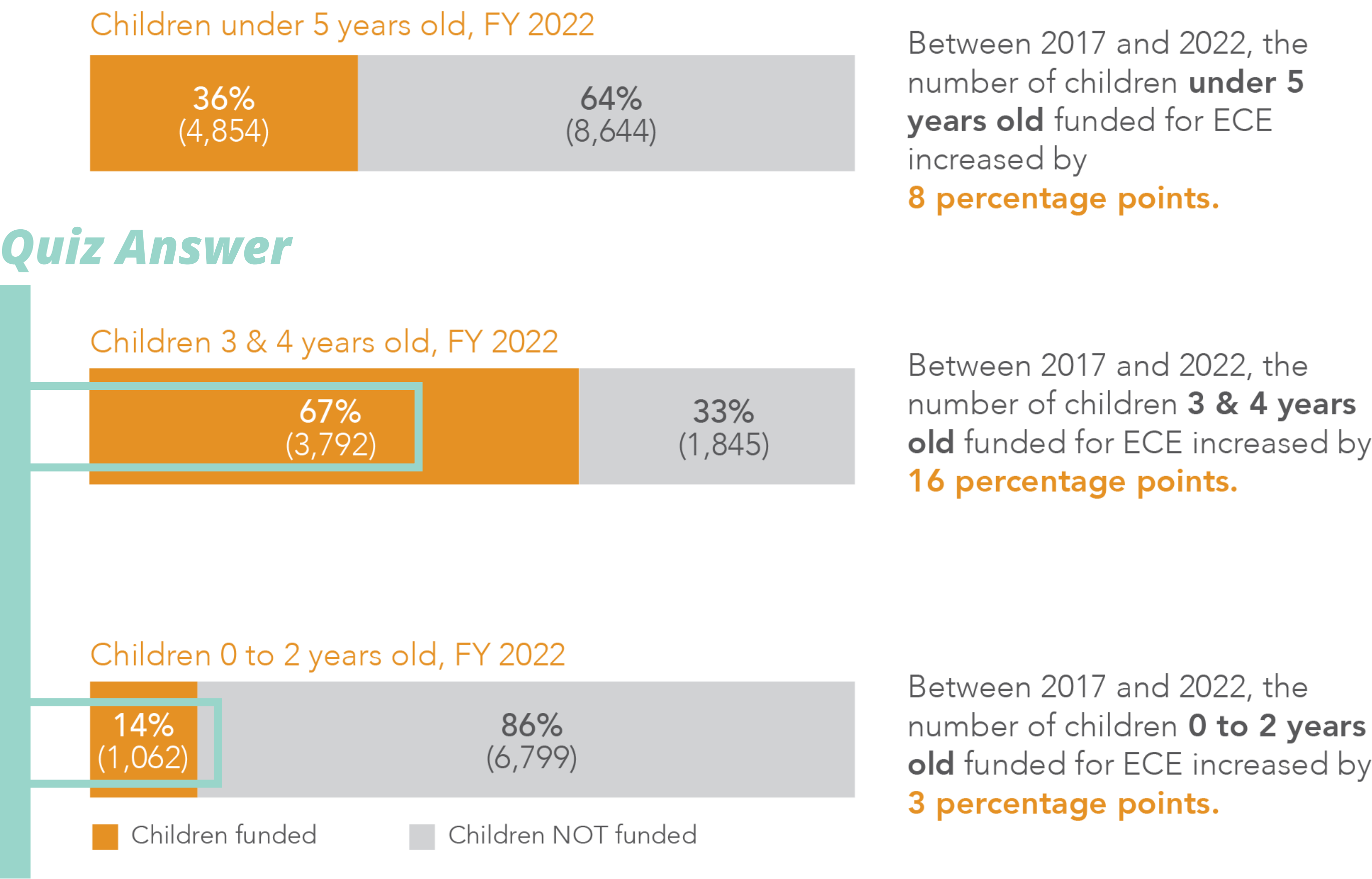
## Goal 2:

Children are Ready for School

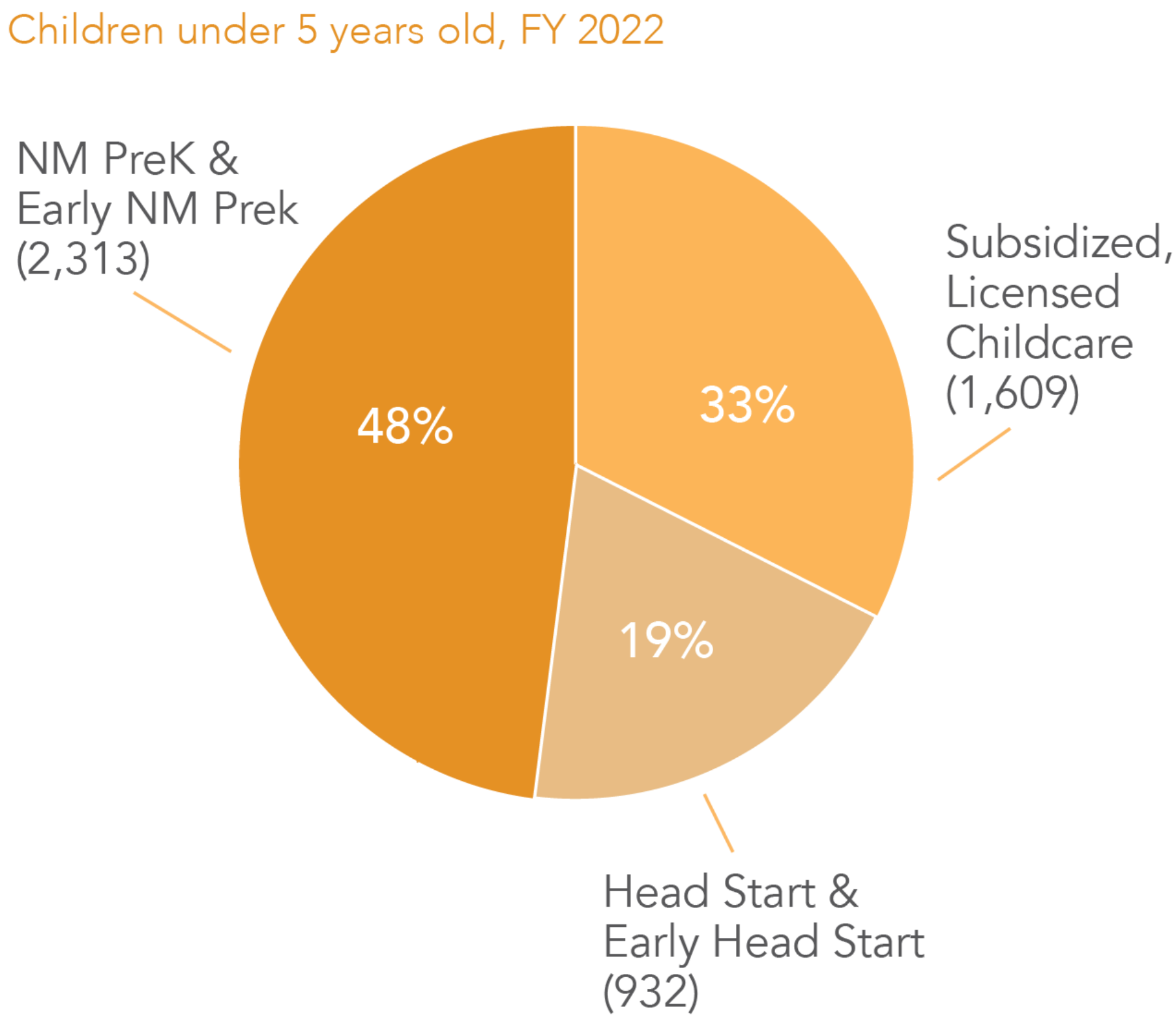


# Differences in Funding for ECE

## DAC Children Funded for ECE vs. Not Funded, by Age:

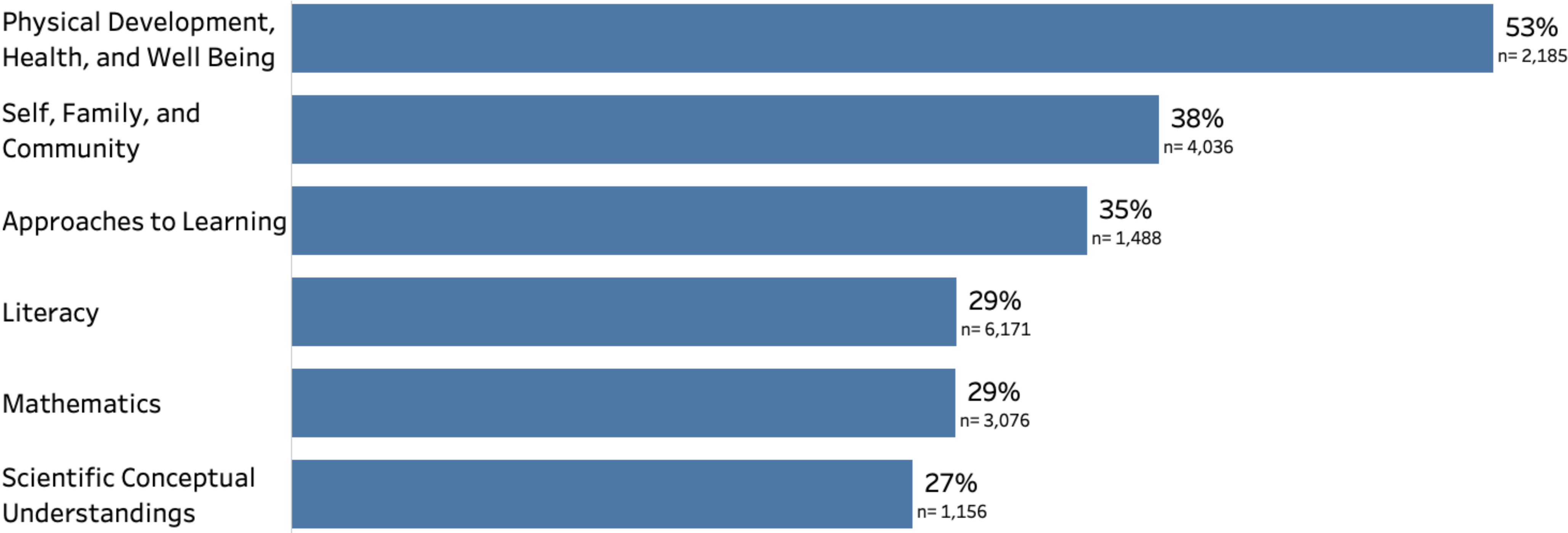


## DAC Children Funded for ECE vs. Not Funded, by Program:



Proficiency

Percentage of Kindergartners in Doña Ana County Meeting Age-Level Expectations, 2022



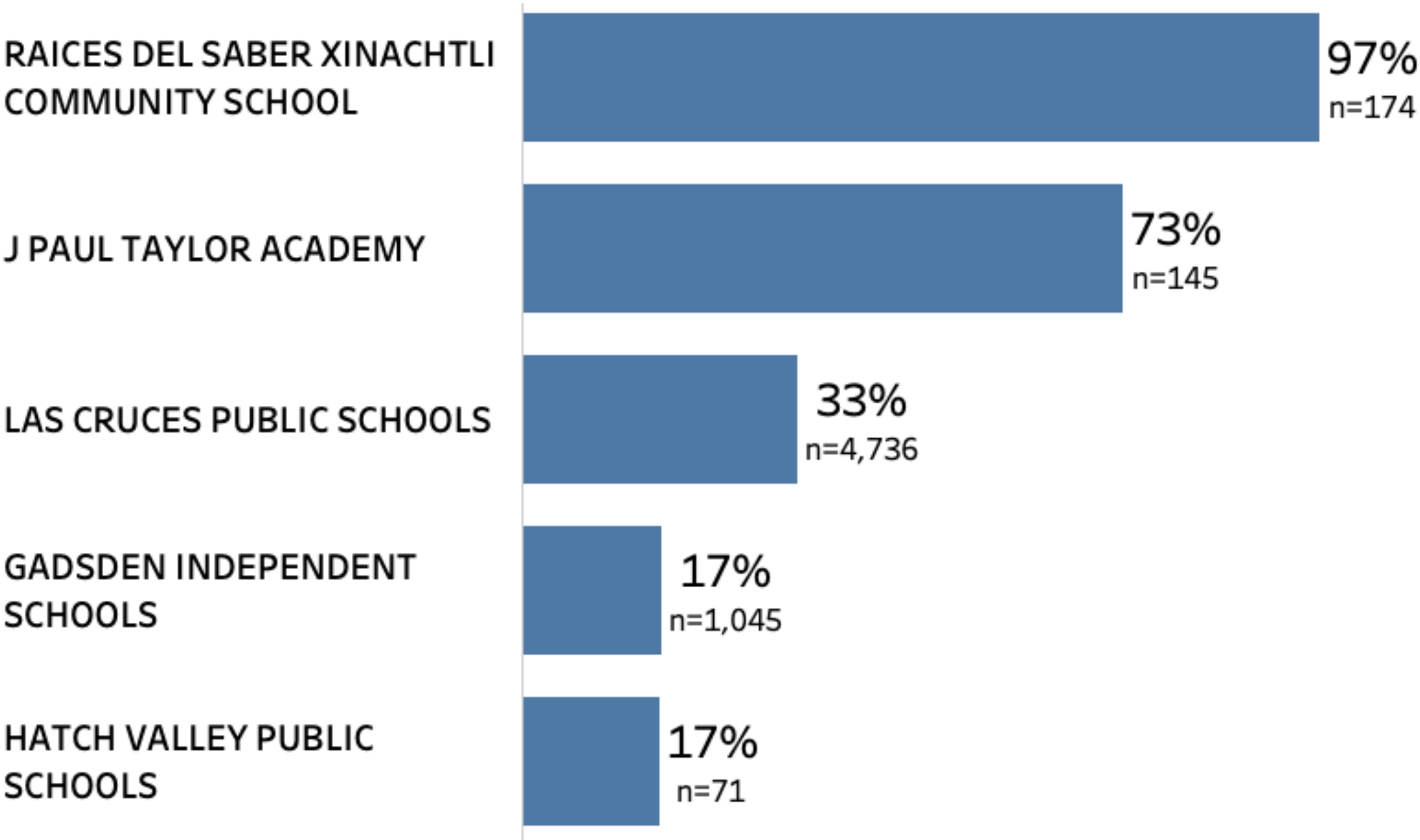
Source: New Mexico Public Education Department, Kindergarten Observation Tool (KOT) results.



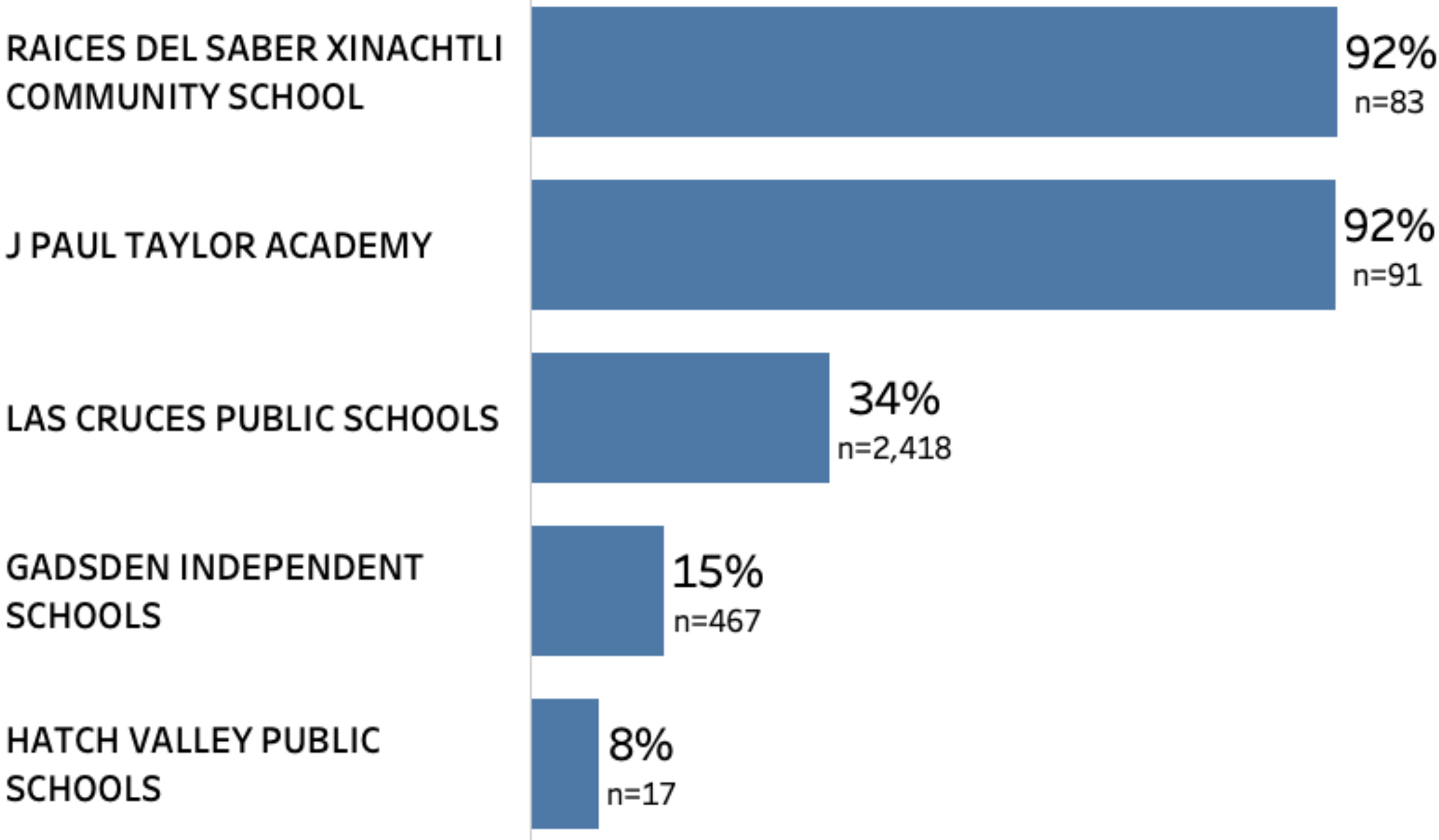
Proficiency (cont.)

Percentage of Kindergartners Meeting Age-Level Expectations in Literacy and Math by District\*, 2022

Literacy



Math



Note: \*Raices Del Saber Xinachtli and J. Paul Taylor are charter schools. Las Cruces, Gadsden, and Hatch are traditional, comprehensive public school districts. Source: New Mexico Public Education Department, Kindergarten Observation Tool (KOT) results.

# Family Dialogue Circle Feedback about Goal 2: Children are Ready for School

## Top themes:

- Children are born into healthy communities
- Access to quality childcare
- Affordable extracurricular activities and education opportunities
- Parent and family involvement in the community

## The *REALITY* of our community needs include:

*"Shortage of police officers, teachers, nurses, senior caregivers that affect the safety & proper care of the vulnerable."*

*"Is hard to find qualified staff to work in child care-which makes it hard for families to find child care."*

*"El rasismo principalmente en las escuelas es alarmante, bullying, violencia y lenguaje ofensivo. (Racism mainly in schools is alarming, bullying, violence and offensive language)."*

*"It's really expensive to have your children in sports and other curricular activities, as a parent you have to choose between paying your bills and having your kids in sports."*

## Hopes and Dreams for children being ready for school:

*"Safe in schools, free to speak their own language, for children with disabilities to have the support to have a career."*

*"Finish their education-terminar su educacion." (To follow their dreams and passions)*

*"Poner mas atencion a nuestros hijos y defenderlos en la escuela". (Give more attention to our children and defend them in the schools)*



# Discussion: Goal 2

What is the story behind the reality of the data? What does this data tell you about the family needs in our community to help children be ready for school?

What are your hopes and dreams for our community? What are your suggestions for realistic action plans to build toward an ideal community?

Does the data challenge or confirm your knowledge about children being ready for school in our community?

Is there any information missing or needing further investigation?

How will you use the data to drive your work in the Coalition and in your personal and professional life?

## Goal 3:

Early Childhood Workforce is  
Supported



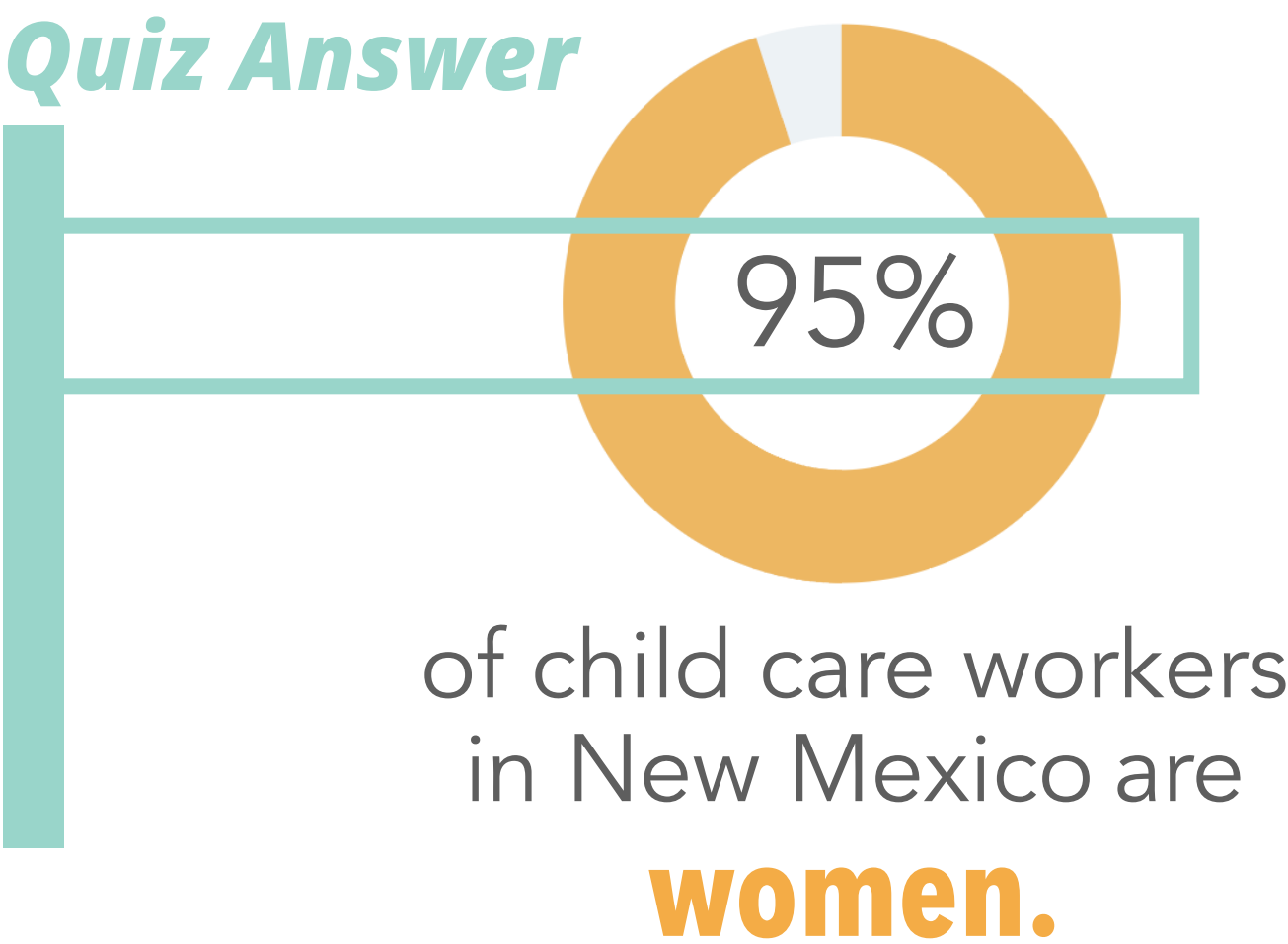
# Snapshot: Early Childhood Education Workforce

1 hour of paid sick leave  
for every 30 hours worked

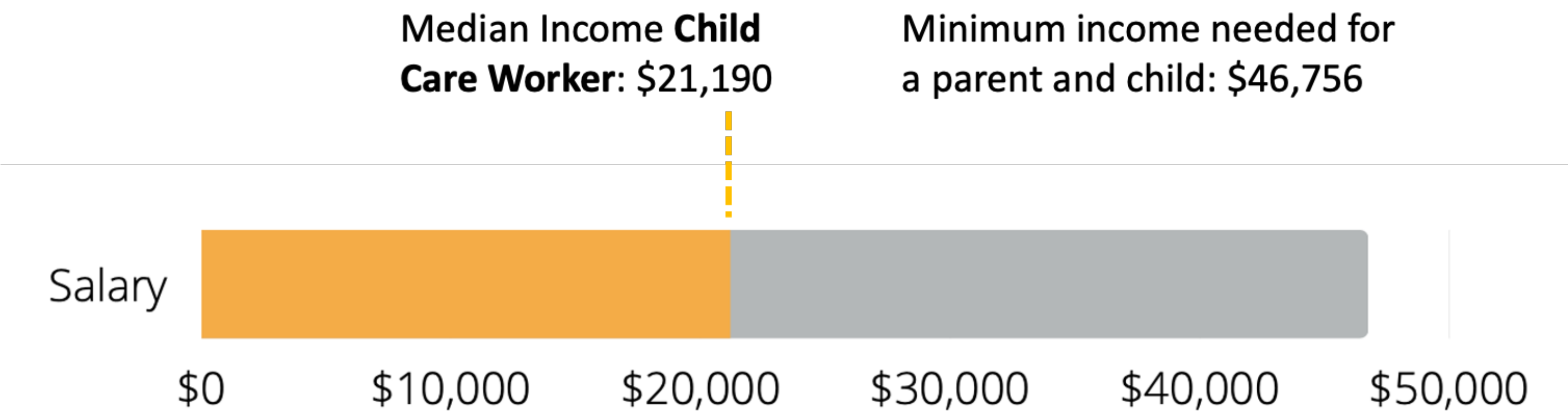
In April 2021, New Mexico passed the Healthy Workplaces Act (effective July 1, 2022), requiring private employers with at least one employee to provide paid sick leave at one hour for every 30 hours worked. This legislation is **one of the strongest paid-sick leave policies in the nation.**

## Child Care Worker Demographics:

Quiz Answer



## Child Care Worker Salary vs. Livable Income:



Sources: United States Bureau of Labor Statistics, accessed September 5, 2022; Economic Policy Institute (EPI) "Child care workers aren't paid enough to make ends meet," and EPI Family Budget Calculator.

# Annual Median Wages by Career in Doña Ana County

## Wages in 2020



Child Care Workers  
\$19,140



Preschool Teachers  
\$23,500



Kindergarten Teachers  
\$41,863



Fast Food Cooks  
\$22,380



## Wages in 2021



Child Care Workers

**\$22,190**



Preschool Teacher\*

**\$26,640**



Kindergarten Teacher

**\$60,040**



Fast Food Cooks

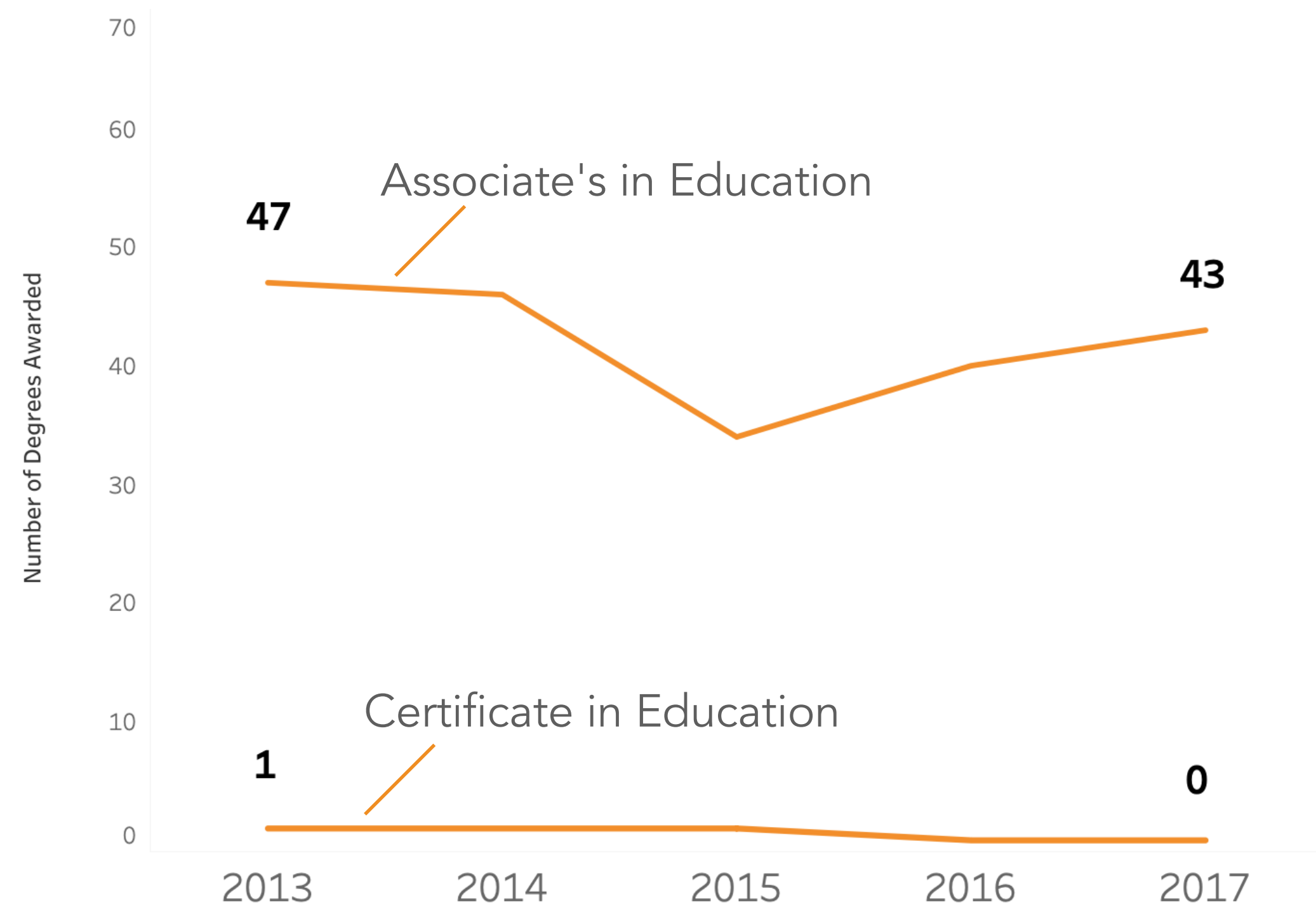
**\$22,220**

**Quiz Answer**

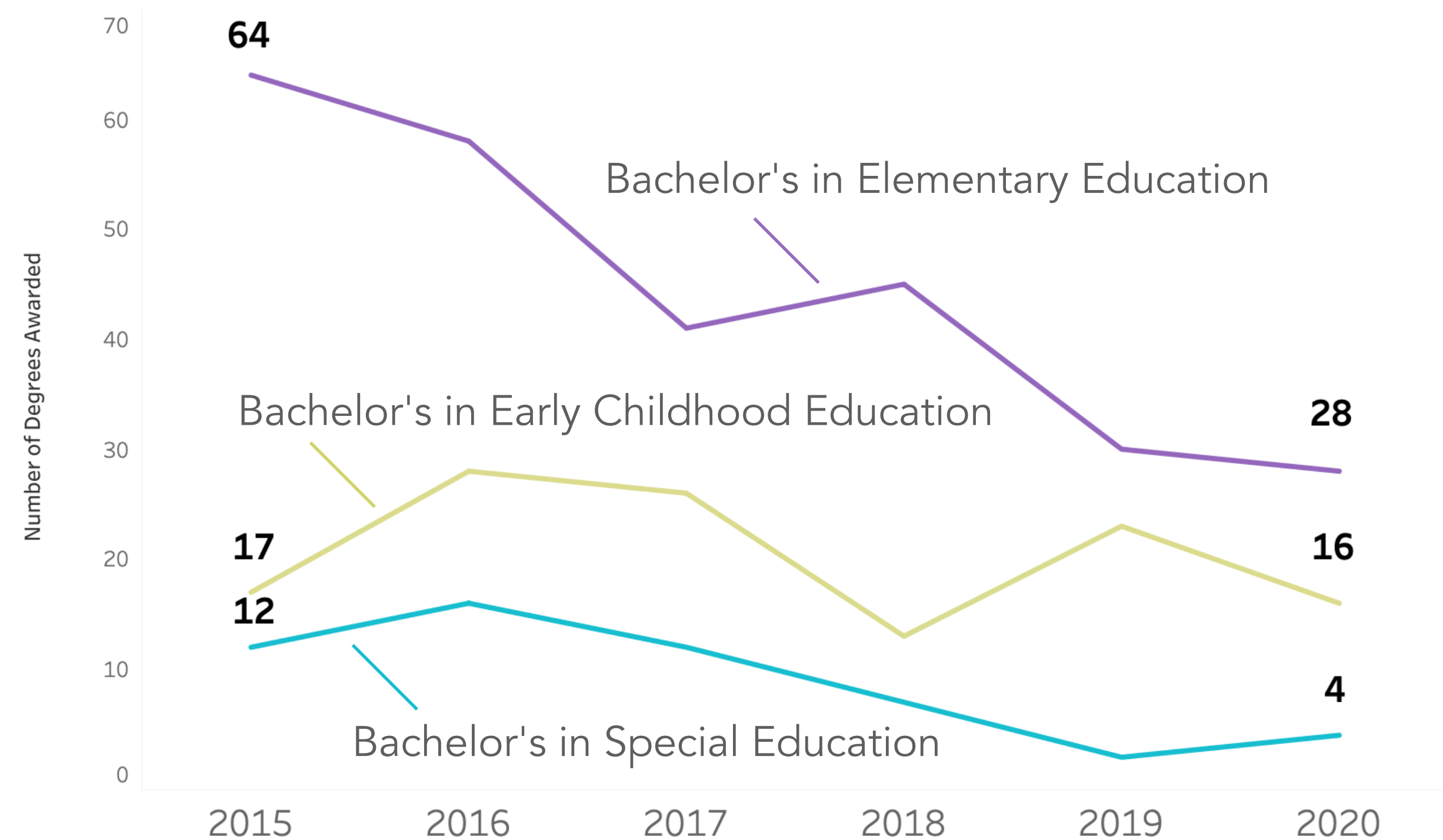


# Education Degrees Awarded in Doña Ana County

Number of Education Degrees awarded at DACC, 2013-2017:



Number of Education Degrees awarded at NMSU, 2015-2020: (Bachelor's degrees only)



Source: Office of Institutional Analysis, New Mexico State University

## Family Dialogue Circle Feedback about Goal 3: ECE Workforce is Supported

### Top themes:

- Existing shortage in ECE Workforce
- Need for expansion of and support for the ECE Workforce
- Safety and sense of protection in schools and community

### The *REALITY* of our community needs include:

*"Missing from community: Extra security/safety (police programs/neighborhood watch with police program, schools, neighborhood watch programs)".*

### *Hopes and Dreams for ECE Workforce being Supported:*

*"Maestros y trabajadores de escuelas que respeten y eduquen a nuestros hijos. Mas parques para que mis hijos y familias disfruten. Mas programs, como este (CDDF) que nos ayudan como padres en aprender mas. (More teachers & staff respecting and educating our children. More parks so that our children and families can enjoy. More programs, like this one (FDC) that come to help us learn more.)"*

*"Programs partnering with NMSU-head start and cultural programs."*

*"Daycares enough space for all kids. Enough focus on the needs of children and less on curriculum."*

*"Maestros capacitados. (Trained teachers.)"*

*"Mental Health resources for families and teachers"*

*"Protection in schools"*

*"Have more quality childcare facilities."*

*"Increase pay for school teachers"*



# Discussion: Goal 3

What is the story behind the reality of the data? What does this data tell you about the needs in our community to support the ECE workforce?

What are your hopes and dreams for our ECE workforce? What are your suggestions for realistic action plans to build toward an ideal workforce?

Does the data challenge or confirm your knowledge about support for the ECE workforce in our community?

Is there any information missing or needing further investigation?

How will you use the data to drive your work in the Coalition and in your personal and professional life?